



## UALL103-NZ Utility Advanced Line Locating

**Course Overview:** This 1 day (up to 8 hours) online utility locator training course is aimed at developing knowledge and skills associated with locating underground utilities (electric power, gas distribution, and telecommunications). This e-learning course provides an Underground Facility Locator (UFL) advanced solutions to abnormal operating conditions (AOCs). This utility locator training course, developed with input from industry subject matter experts, is highly recommended by beforeUdig New Zealand as a first step to locator certification. It details the necessary methods and procedures to safely perform utility locates as per applicable regulatory requirements, acts and industry best practices. Included in this utility locator training course: Online quizzes and a final exam. Certificate and wallet card issued upon successful completion.

### Module 1 – Introduction

1. Describe underground (buried) facilities and ground disturbance

### Module 2 – beforeUdig Enquiries and Locator Responsibilities

1. Identify locate requests and Locator responsibilities

### Module 3 – Locating Procedures

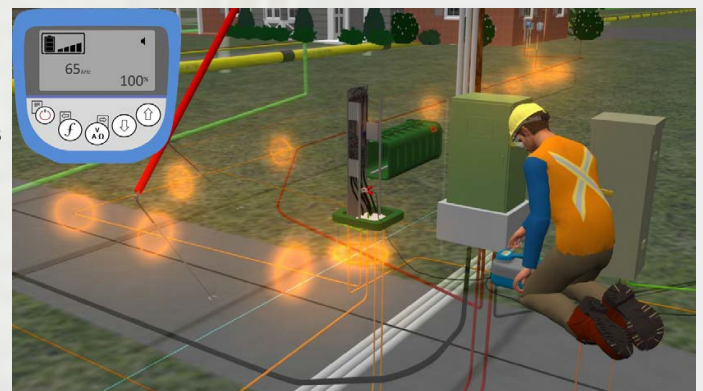
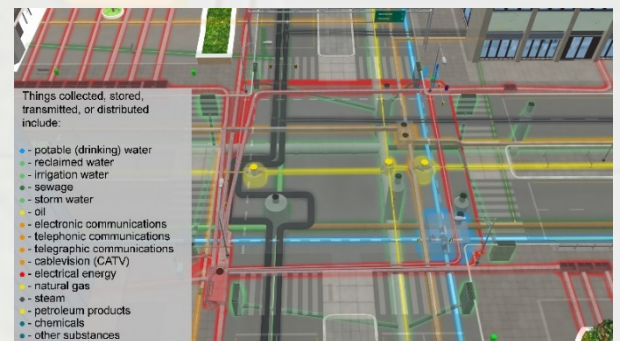
1. Explain locating procedures

### Module 4 – Locating Fundamentals

1. Describe the theory of electromagnetic locating
2. Explain frequencies and transmitter signals
3. Explain receiver signals and antenna configurations
4. Discuss signal distortion

### Module 5 – Active Locating Methods

1. Explain and apply the Direct Hook-up Method
2. Explain and apply the Inductive Clamp Method
3. Explain and apply the Inductive Method





### Module 6 – Passive Locating Methods

1. Explain and apply the Radio Mode
2. Explain and apply the Live Cable (Power) Mode
3. Explain and apply the CPS Mode

### Module 7 – Advanced Locating Methods

1. Explain and apply the Parallel Line Check Method
2. Explain and apply the Sweeping Method
3. Explain and apply the Multi-Angle Sweeping Method
4. Explain and apply the 360° Sweeping Method
5. Explain and apply the ALL Method

### Module 8 – Site Awareness Techniques

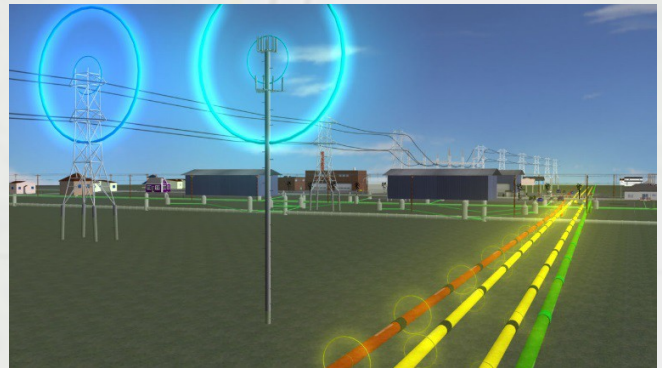
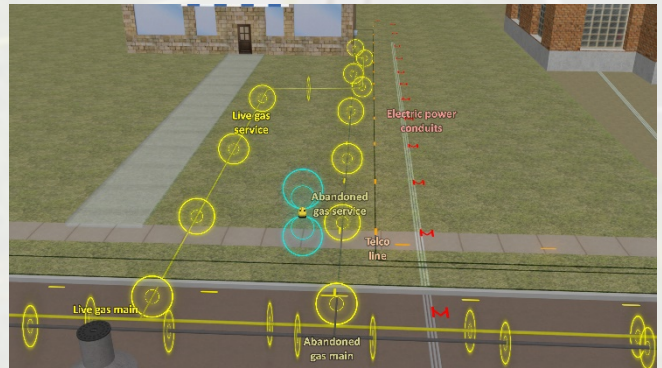
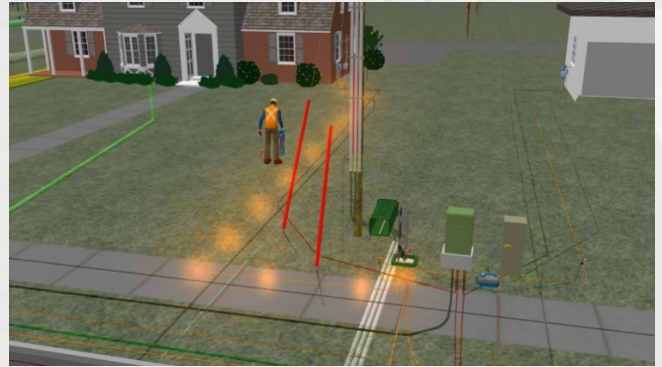
1. Explain and apply the Point A to Point B Method
2. Explain and apply the Measurement Method
3. Explain and apply the Visual Evidence Method

### Module 9 – Locating Obstacles

1. Explain locating obstacles

### Module 10 – Problem Solving

1. Apply problem solving procedures



**before u dig™**  
.co.nz

