

Locate Management

Call 1-844-LMTRAIN (1-844-568-7246) or visit www.locatemanagement.com



UALL103 Utility Advanced Line Locating

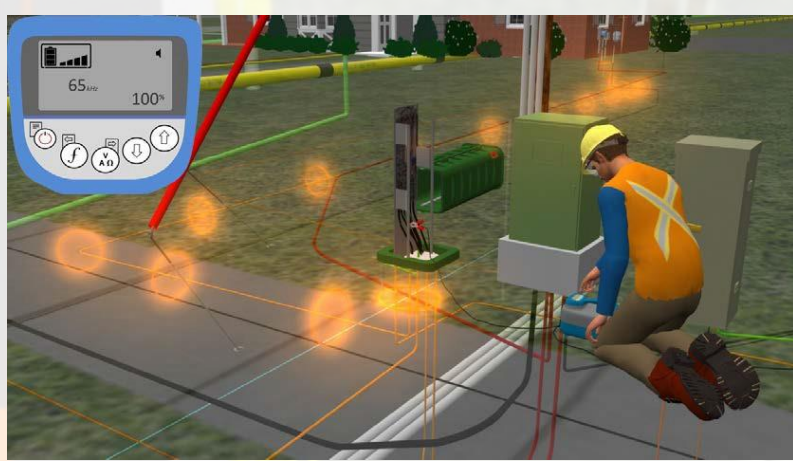
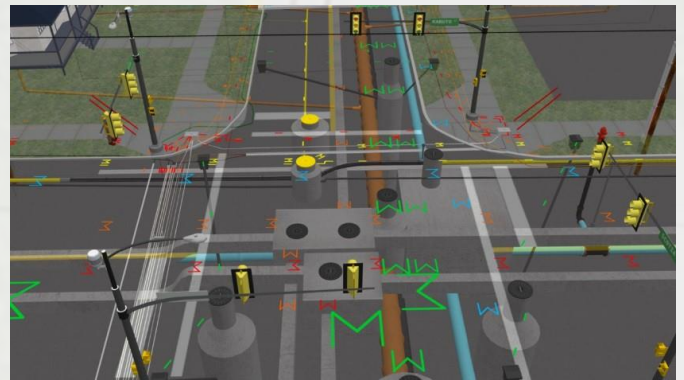
Course Overview: This 1-day (up to 8 hours) online utility locator training course is aimed at developing knowledge and skills associated with locating underground utilities (electric power, gas distribution, and telecommunications). This utility locator training course provides an Underground Facility Locator (UFL) advanced solutions to abnormal operating conditions (AOCs). This e-learning utility locator training course was developed with input from industry subject matter experts. It details the necessary methods and procedures to safely perform utility locates as per applicable regulatory requirements, acts and industry best practices. Included in this utility locator training course: Online quizzes and a final exam. Certificate and wallet card issued upon successful completion.

Module 1 – Introduction

1. Describe utility facilities
2. Describe ground disturbance
3. Identify locate requests and responsibilities
4. Explain locating procedures

Module 2 – Fundamentals of Line Locating

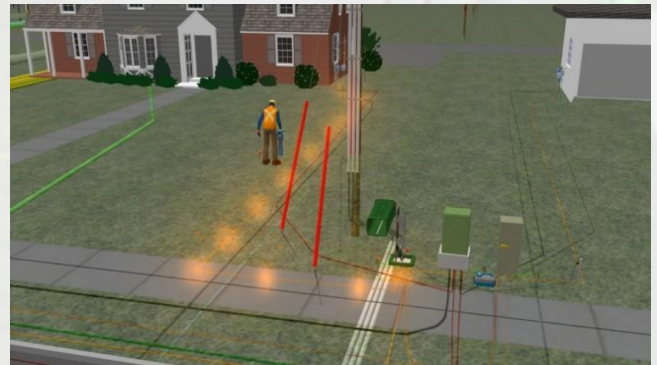
1. Describe the theory of electromagnetic locating
2. Explain frequencies and transmitter signals
3. Explain receiver signals and antenna configurations
4. Discuss signal distortion





Module 3 – Active Locating Methods

1. Explain and apply the Direct Hook-up Method
2. Explain and apply the Inductive Clamp Method
3. Explain and apply the Inductive Method

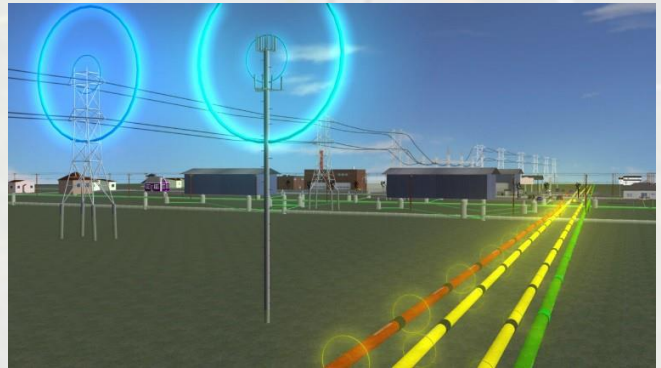


Module 4 – Passive Locating Methods

1. Explain and apply the Radio Mode
2. Explain and apply the Live Cable (Power) Mode
3. Explain and apply the CPS Mode

Module 5 – Advanced Locating Methods

1. Explain and apply the Parallel Line Check Method
2. Explain and apply the Sweeping Method
3. Explain and apply the Multi-Angle Sweeping Method
4. Explain and apply the 360° Sweeping Method
5. Explain and apply the ALL Method



Module 6 – Unconventional Locating Methods

1. Explain and apply the Point A to Point B Method
2. Explain and apply the Measurement Method
3. Explain and apply the Visual Evidence Method

Module 7 – Obstacles and Problem Solving

1. Explain locating obstacles
2. Apply problem solving procedures

